



Università degli Studi di Pavia
Facoltà di Musicologia

con il contributo di
 **fondazione
cariplo**

PROGETTO *Valorizzazione dei fondi speciali della Biblioteca della Facoltà di Musicologia*
con il contributo della Fondazione CARIPLO

Responsabile PROF. PIETRO ZAPPALÀ – collaboratore: DR. MASSIMILANO SALA

FONDO ALBERT DUNNING, N° 54

EENIGE BEGINSELEN VOOR HET CLAVIER SPEL
[Arie. pf. Scelta]

Eenige Beginselen | *voor het* | CLAVIER SPEL | met XII zeer gemakkelyke | MUZIEK
STUKJES, *tot dienst van* | LEERLINGEN. | Eerste deeltje. | Prys 16 Stuyvers
Te AMSTERDAM. | By de Wed: MARKORDT op't Rokkin over het Haagsche
Veer. [ca. 1760].

[1]-12, 15-16 p.; mancano le pp. 3-4 e 13-14; 25 x 18 cm.

EX LIBRIS

*

ALBERT DUNNING

Eenige Beginselen

voor het

CLAVIER SPEL

met XII zeer gemakkelyke

MUZIEK STUKJES,

tot dienst van

LEERLINGEN.

Eerste Deeltje.

Prys: 16' stuivers.

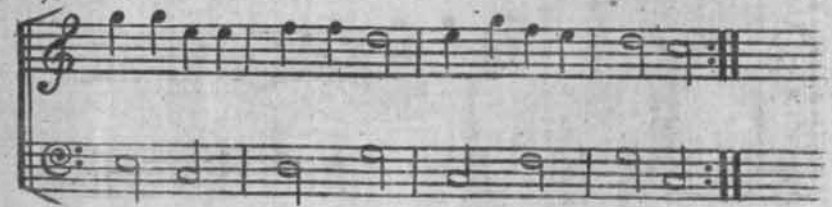
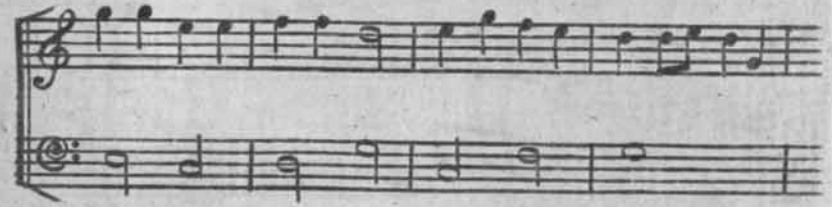
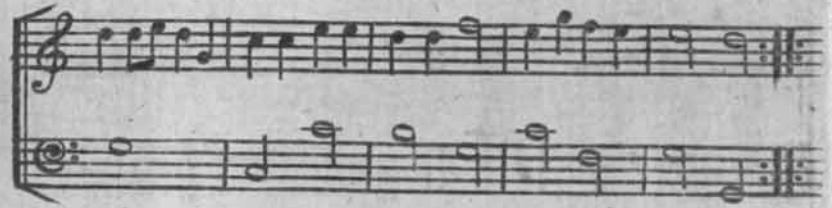
Te AMSTERDAM.

By de Wed: MARKORDT op 't Rokkin over het Haagfche Veer.

A I R

N.º I.

5



6

AIR

N^o II.

The first system of the 'AIR N° II.' consists of two staves. The upper staff is in treble clef with a 2/4 time signature, starting with a treble clef and a key signature of one sharp (F#). The lower staff is in bass clef with a 2/4 time signature, starting with a bass clef and a key signature of one sharp (F#). The music begins with a melodic line in the treble and a supporting bass line.

The second system of the 'AIR N° II.' consists of two staves. The upper staff is in treble clef with a 2/4 time signature, starting with a treble clef and a key signature of one sharp (F#). The lower staff is in bass clef with a 2/4 time signature, starting with a bass clef and a key signature of one sharp (F#). The music continues with a melodic line in the treble and a supporting bass line.

The third system of the 'AIR N° II.' consists of two staves. The upper staff is in treble clef with a 2/4 time signature, starting with a treble clef and a key signature of one sharp (F#). The lower staff is in bass clef with a 2/4 time signature, starting with a bass clef and a key signature of one sharp (F#). The music continues with a melodic line in the treble and a supporting bass line.

The fourth system of the 'AIR N° II.' consists of two staves. The upper staff is in treble clef with a 2/4 time signature, starting with a treble clef and a key signature of one sharp (F#). The lower staff is in bass clef with a 2/4 time signature, starting with a bass clef and a key signature of one sharp (F#). The music concludes with a melodic line in the treble and a supporting bass line.

7

MENUET

N^o III.

The first system of the 'MENUET N° III.' consists of two staves. The upper staff is in treble clef with a 3/4 time signature, starting with a treble clef and a key signature of one sharp (F#). The lower staff is in bass clef with a 3/4 time signature, starting with a bass clef and a key signature of one sharp (F#). The music begins with a melodic line in the treble and a supporting bass line.

The second system of the 'MENUET N° III.' consists of two staves. The upper staff is in treble clef with a 3/4 time signature, starting with a treble clef and a key signature of one sharp (F#). The lower staff is in bass clef with a 3/4 time signature, starting with a bass clef and a key signature of one sharp (F#). The music continues with a melodic line in the treble and a supporting bass line.

The third system of the 'MENUET N° III.' consists of two staves. The upper staff is in treble clef with a 3/4 time signature, starting with a treble clef and a key signature of one sharp (F#). The lower staff is in bass clef with a 3/4 time signature, starting with a bass clef and a key signature of one sharp (F#). The music continues with a melodic line in the treble and a supporting bass line.

The fourth system of the 'MENUET N° III.' consists of two staves. The upper staff is in treble clef with a 3/4 time signature, starting with a treble clef and a key signature of one sharp (F#). The lower staff is in bass clef with a 3/4 time signature, starting with a bass clef and a key signature of one sharp (F#). The music concludes with a melodic line in the treble and a supporting bass line.

AIR
N^o. IV.

AIR
N^o. V.

10

MENUET
N^o VI.

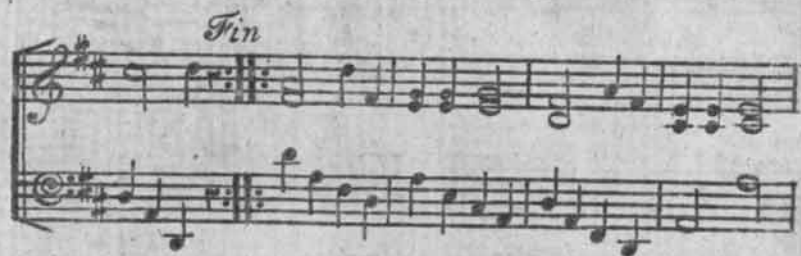
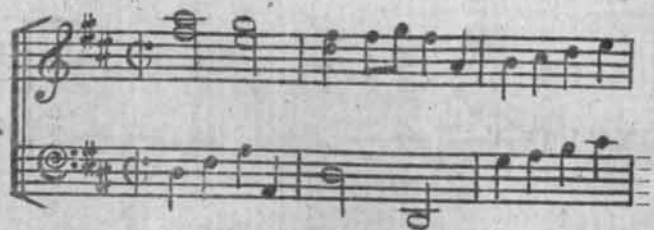
Musical score for Menuet N° VI, page 10. The score is written in G major (one sharp) and 3/4 time. It consists of four systems of two staves each (treble and bass clef). The first system begins with a treble clef and a key signature of one sharp (F#). The piece concludes with a double bar line and repeat dots.

II

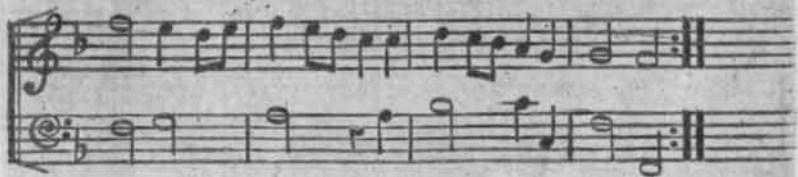
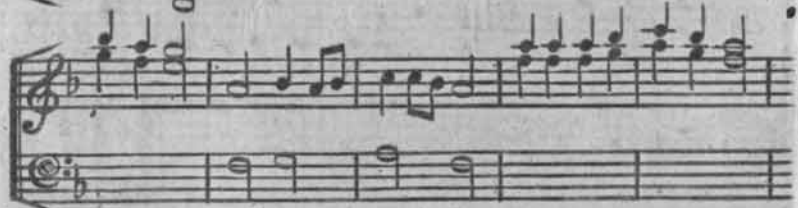
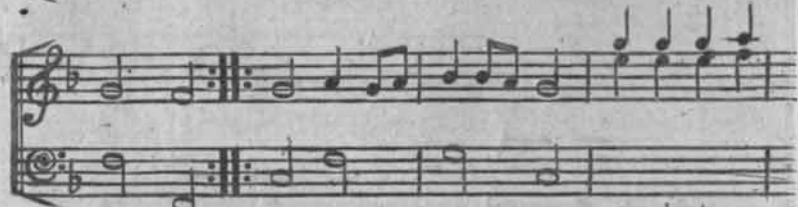
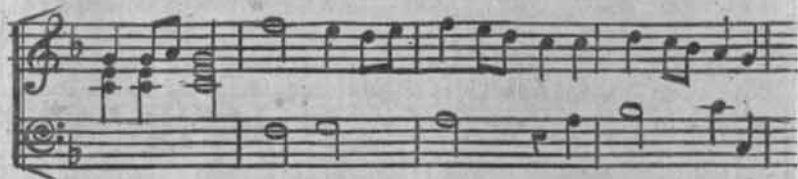
AIR
N^o VII.

Musical score for AIR N° VII, page 11. The score is written in G major (one sharp) and 2/4 time. It consists of six systems of two staves each (treble and bass clef). The first system begins with a treble clef and a key signature of one sharp (F#). The piece concludes with a double bar line and repeat dots.

AIR
N^o VIII.



AIR
N^o XI.



16

AIR

N^o XII.

